



Clitheroe Auction Mart

*Auctioneers and valuers of
breeding, store & prime livestock and machinery*

Tel: 01200 423325

Joe: 07970 221354

Ian: 07970 885706

Jeremy: 07815 727993

Ribblesdale Centre, Lincoln Way, Clitheroe, Lancashire BB7 1QD

www.auctionmart.co.uk

**SALE OF PLANT,
FARM MACHINERY & TOOLS
on
SATURDAY 23rd MARCH 2013**

**SALE COMMENCING AT 10AM IN THE SHED
FOLLOWED BY LARGER ITEMS OUTSIDE AT
APPROX 12.30pm**

NO BUYERS PREMIUM IN MACHINERY SECTION, HOWEVER, SALES VAT MAY BE APPLICABLE TO SOME ITEMS. PLEASE LISTEN FOR AUCTIONEER ANNOUNCEMENTS AT TIME OF SALE.

NO LOTS SOLD OR UNSOLD TO BE REMOVED WITHOUT OBTAINING A PASSOUT FROM THE OFFICE.

The majority of lots sold will be in lot number order as listed but please listen for auctioneer announcements for alterations to sale order

**NEXT MACHINERY SALE ON SATURDAY 18th MAY 2013
NEXT VINTAGE TRACTOR SALE ON SATURDAY 11TH MAY 2013**

01200 423325

LOT**DESCRIPTION****INSIDE**

1376	TOUGH MATE
1377	CIRCULAR SAW
1378	HOSE & REEL
1379	BOX MISC TOOLS
1380	LONG ARMED PRUNERS
1381	BOX MISC TOOLS
1382	QTY OF GLOVES
1383	CHAIN
1384	BOX NAILS
1385	LONG ARMED PRUNERS
1386	BOX SAND PAPER
1387	STUBB DETECTORS
1388	QTY WORK BAGS
1389	2 STIHLSONS
1390	QTY HINGES & CLAMP
1391	SLEDGE HAMMER
1392	3 CLAMPS
1393	LUMP HAMMER & 2 BOLSTERS
1394	3 SAW BLADES
1395	NAIL BAR & SLEDGE HAMMER
1396	3 PAINT BRUSHES
1397	3 PACKS PRUNERS
1398	5 PRS BOLT CROPPERS
1399	2 PAIR PLIERS
1400	5 VARIOUS PLIERS & CUTTERS
1401	10 HACK SAWS
1402	2 RAKES & HEDGE CUTTERS
1403	MAYFIELD MOWER
1404	MIXER STAND
1405	WEBB ROTAVATOR
1406	CHAMPION MOWER
1407	ROBIN HEDGE CUTTER
1408	BELLE MIXER
1409	2 BOXES CUTTER BRACKET ROOF NAILS
1410	3 BOXES SPANNERS/TOOLS
1411	IMPACT SHREDDER
1412	GAS FIRE
1413	EINHELL DRILL
1414	HAMMER DRILL 18 VOLT
1415	POWER PACK COMPRESSOR
1416	SANDER
1417	SPRAY STATION
1418	2 SANDERS

LOT	DESCRIPTION
1419	WORK BENCH/ STEP
1420	JIGSAW
1421	STRIMMER
1422	5 DRAWER TOOL CHEST & TOOL SET
1423	EASY SPREADER
1424	COMPRESSOR
1425	STRIMMER
1427	SNOW PLOUGH
1428	8 X 6 ALUMINIUM FRAME & BASE
1429	DRILL
1430	6 X 6 ALUMINIUM FRAME & BASE
1431	6 X 6 ALUMINIUM FRAME & BASE
1432	COMPRESSOR
1433	WORK ZONE DRILL
1434	EVOLUTION SAW
1435	SANDER
1436	PINK BUCKET MISC HORSE EQUIPMENT
1437	GREEN BUCKET OF MISC
1438	BLACK BUCKET & CONTENTS
1439	TIN BOX
1440	HEAD OFF A STRIMMER
1441	SELECTION OF TOOLS
1442	ELECTRIC FENCE
1443	JCB POWER WASHER
1444	PTO SHAFT
1445	ELECTRIC FENCING POSTS
1446	ELECTRIC FENCING POSTS
1447	BOX MIXED WATER PARTS
1448	HORNS
1449	4 SMALL WHEELS
1450	FLYMO LAWNMOWER
1451	YOBİ CHAIN SAW
1452	2 MINI WHEELS
1453	GREEN BOX MISC ITEMS
1454	MIXED BULBS
1455	BOX STRAPS
1456	RED BASKET OF MIXED ITEMS
1457	2 WHITE BAGS OF NETTING
1458	CAGE & TRAP
1459	BOX TOOLS INCL PLANE,SCREWDRIVERS
1460	JUMP LEADS,BATTERY CHARGER & LEAD (3)
1461	REDUCER & INSPECTION LAMP
1462	TOWING HITCH LOCK & JUMP LEADS
1463	BOX OF TAIL LAMPS
1464	BOX ASSORTED METAL FITTINGS

LOT	DESCRIPTION
1465	BOX MISC
1466	BOX TOWING HITCH & SHACKLES
1467	ORANGE BUCKET INCL GATE HINGES ETC
1468	MIXED ITEMS
1469	BOX ASSORTED SCREWS & BOLTS
1470	BOX MIXED TOOLS
1471	TARMAC TAMPER
1472	MIXED ITEMS INCL HINGES
1473	MIXED ITEMS
1474	4 CUTTING DISCS
1475	MAKITA DRILL + CASE
1476	BOX NAILS
1477	FEEDING TROUGH
1478	WEBB MOWER
1479	QTY ROPE & NETTING
1480	BUCKET OF FILES
1481	PR STIHLSONS
1482	YELLOW CHAINSAW
1483	GOLF CLUBS & TROLLEY
1484	TOOL BOX & CONTENTS
1485	BOX & TOOLS
1486	GAS CALOR GUN & LIGHT
1487	3 FORKS + PITCHFORK & POT FORK
1488	HEDGE CLIPPERS,4 SYTHES & STONE
1489	BOX & CONTENTS
1490	3 HOES,2 BRUSHES & STEEL ROD
1491	BOX DRAIN STOPS & PULLEYS
1491A	WOOD CLAMP,2 WEDGES & CAR HOOVERS
1492	TROLLEY JACK & BOTTLE JACK
1493	BOX SPLIT PINS & TUB FENCING STAPLES
1494	FIRST AID KIT & CLEANSING WIPES
1495	ASS HAMMERS & 2 TAPE MEASURES
1496	WELDING MASK,2PR WELDING RODS ETC
1497	STORAGE BOX & ASS HAND SAWS/SET SQUARE
1498	ELECTRIC CIRCULAR SAW
1499	BOX ASS AIR TOOLS (9)
1500	BOX ASSORTED A TO Z MAPS
1501	SCISSOR HAND RIVETS & ASSORTED RIVETS
1502	3 WELDING ACCESSORY PACKS
1503	ASSORTED SOCKET & BITS
1504	ELECTRIC DRILL,CORDLESS & EXT LEAD (3)
1505	TRIPOD SPOT LIGHT
1506	3 SHOVELS
1507	10 LIFTING STAPS,2 RATCHETS WITH STRAPS
1508	SPACE HEATER

LOT	DESCRIPTION
1509	SLEDGE HAMMER,RAKE & BOW SAW
1510	ASSORTED NUTS & BOLTS & WASHERS
1511	3 BREAKER BARS
1512	BOX CAR ACCESSORIES
1513	TRAILER JOCKEY WHEEL
1514	BENCH GRINDER
1515	PR HI VIZ PANTS
1516	BOX ASSORTED TOOLS
1517	BAG LYNCH PINS
1518	2 STIHLSONS
1519	TUB PLIERS & TIN SNIPS
1520	12 ASSORTED DRILL BITS (WOOD)
1521	ASSORTED TOOLS
1522	COMPRESSOR
1523	10 FT BROTHERS CHAIN
1524	KARCHER HDS 750
1525	MOWER
1526	ROLL NETTING
1527	GAS BOTTLE TROLLEY
1528	3 ALLOYS TO FIT GOLF
1529	CIRCULAR SAW
1530	10 FT BROTHERS CHAIN
1531	CUB CADET MTD TRACTOR
1532	FORDSON DEXTA ENGINE SPARES
1533	SINGLE PHASE OXFORD WELDER
1534	BARROW WHEEL
1535	CHAIN
1536	M.F TOP LINK
1537	5 SHEETS OF ALLOY
1538	BOX BOLTS
1539	CHAIN
1540	TOP LINK
1541	HEAD BOARD FOR IFOR TRAILER
1542	BOX BOLTS
1543	2 PETROL CANS
1544	BOX BOLTS
1545	PTO GUARD
1546	M.F DRIVE SHAFT
1547	2 STRUTS FOR RANGE ROVER
1548	PTO GUARD
1549	QUICK HITCH LOADER BRACKETS
1550	2 PTO SHAFT
1551	QTY TRACTOR BITS
1552	2 BLOODLESS CASTRATORS
1553	4 TYRES & RIMS

LOT	DESCRIPTION
1554	5 BOXES - QTY MISC TOOLS & FITTINGS
1555	2 MOWERS FOR SPARES
1556	TOOL BOX, TOOLS & EXTENSION LEAD (4)
1557	2 STRIMMERS
1558	POWER WASHER & ELECTRIC MOTOR
1559	FLYMO MOWER
1560	WHEELBARROW
1561	QTY HAND TOOLS
1562	QTY TOOLS
1563	DRAINING RODS & CHIMNEY SWEEP
1564	ALUMINIUM LADDERS
1565	LADDER
1566	BOX PAINTS & TOOL BITS
1567	QTY TOOLS
1568	QTY TOOLS & OILS
1569	BOX WOOD TOOLS
1570	2 BOXES TOOLS
1571	2 CLASSIC OIL
1572	VICE
1573	BOX SPANNERS
1574	WORK MATE
1575	FOOD BIN
1576	2 TRANSIT WHEELS
1577	LETTER BOX - KEY IN OFFICE
1578	BOX MISC
1579	3 TOOLS FOR SPARES
1580	2 SCYTHES
1581	QTY OLD TOOLS
1582	PLASMA CUTTER
1583	3 PLANTERS
1584	3 PLANTERS
1585	PLOUGH MARKER
1586	SMALL PLOUGH
1587	SCARIFIER
1588	2 BOX MISC
1589	5 BAGS CARROTS
1590	5 BAGS CARROTS
1591	5 BAGS LOGS
1592	4 QUAD TYRES
1593	BLOCK & TACKLE
1594	2 X 56LB WEIGHTS & 1 HUB
1595	DUMPY LEVEL
1596	110 VOLT COMP
1597	POST HOLE DIGGER & TIGHTNER
1598	CHAINS

LOT	DESCRIPTION
1599	CAR HOIST
1600	QTY CHOP SAWS & BOXES
1601	HEAVY DRILL
1602	4 ACROES
1603	2 ACROES
1604	3 RD FORMS & PINS
1605	QTY TREE GUARDS & BUTT
1606	QTY SOLID OAK FLOORING
1607	DAIRY WASH TUB
1608	FORD TRACTOR BONNET
1609	M.F. FINGER BAR MOWER GUARD
1610	LEYLAND GUARD
1611	DRILL STAND
1612	LEYLAND SIDE WINDOWS
1613	3 MOWERS
1614	PETROL LEAF BLOWER
1615	2 PLANTERS
1616	ELECTRIC LEAF BLOWER
1617	PATIO HEATER
1618	SHREDDER
1619	HAY RACK
1620	PARAFFIN HEATER
1621	NISSAN WHEEL 155X13 TYRE
1622	PARAFFIN HEATER
1623	SPEAR & JACKSON PETROL STRIMMER
1624	CASTLE GARDEN PETROL STRIMMER
1625	PAIR WOODEN BOAT OARS
1626	10 TINS BLACK BITUMEN PAINT
1627	TOW BAR & SOCKET
1628	STIHL TS 760 CUT OFF SAW
1629	HONDA HEDGE CUTTER
1630	JCB FUEL TANK
1631	RECORD VICE
1632	2 BOAT FUEL TANKS
1633	2 SINKS
1634	FUEL CAN
1635	4" GRINDER
1636	3 LEAF BLOWERS
1637	MAKITA 5703 CIRCULAR SAW
1638	MAKITA DRILL
1639	SPREADER PLATE
1640	6 TINS BITUMEN PAINT
1641	BATTERY CHARGER BOOSTER
1642	4 BOXES OF KINDLING
1643	6 BAGS KINDLING

LOT	DESCRIPTION
1644	QTY WATER TAPS
1645	QTY BEACONS
1646	2 X 12 VOLT HAND BASINS
1647	AIR TANK
1648	MUDGUARD PROPS
1649	HYDRAULIC BREAKER PLATE
1650	2 JCB ARMS
1651	CAB GUARD FRAME
1652	QTY BUSHES
1653	BOX HOSE CLAMPS
1654	24 VOLT HYDRAULIC PUMP
1655	12 VOLT FAN
1656	JCB LOADALL FRAME
1657	4 1200 X 1350 WINDOWS
1658	4 SMALL WINDOWS
1659	2 CAST IRON FIRE PLACE & BRASS FENDER
1660	2 CAST IRON FIREPLACE & BRASS FENDER
1661	ROLLER PRESS
1662	BAND SAW
1663	MASSEY FERGY DOOR
1664	TABLE
1665	BOX MASSEY FERGY DOOR
1666	MF TOWING WEIGHT PART
1667	MASSEY REAR WINDOW
1668	REAR WINDOW
1669	SACK OF LARGE WASHERS
1670	TOWING BAR
1671	CORDLESS DRILL
1672	OIL VALVE
1673	REAR DOOR
1674	BOX OF LIGHTS
1675	NEW TRACTOR SEAT
1676	BOX OF BELTS
1677	HOSE & REEL
1678	PR LOADING RAMPS
1679	SPREADER FLOATATION WHEEL & TYRE
1680	SPOOL VALVE & PIPES
1681	2 RAMS
1682	MINI DIGGER BUCKET
1683	MINI DIGGER BUCKET
1684	FRONT LOADER FRAME
1685	GREY FERGY HITCH PARTS
1686	GUARDS
1687	4 JCB BUCKET TEETH
1688	2 PALLET FORKS

LOT	DESCRIPTION
1689	3 POINT LINKAGE
1690	HITCH
1691	FORD REAT HITCH
1692	RYOBI PROFESSIONAL CIRCULAR SAW
1693	MAKAITA ELECTRIC PLANE
1694	HALFORDS POWER WASHER
1695	ROTARY PHASE CONVERTER SINGLE TO THREE
1696	WAGON SHEET
1697	ALLOY SCAFFOLDING
1698	WELD ON EURO BRACKETS
1699	SACK TRUCK
1700	2 ROLLS GAS PIPE
1701	4 LIGHTS
1702	BOX TOOLS
1703	TUB NAILS & RAGG BOLTS
1704	NEW RECORD DRILL STAND
1705	2 SOCKET SETS
1706	3 BLOW TORCHES & GAS LIGHTS
1707	PR JUMP LEADS
1708	IFOR WILLIAMS TOWING EYE
1709	CB RADIO ETC
1710	MULTI FUEL STOVE
1711	2 CLEANING FLUIDS
1712	QTY PLUMBING SPARES
1713	HEN COUPE
1714	HEN COUPE
1715	WHEEL BARROW
1716	FOX TRAP
1717	BOC GATE FITTINGS
1718	2 HEN CRATES
1719	3 TOOL BOXES
1720	TILLER
1721	GENERATOR
1722	QUALCAST MOWER WORKING
1723	2 JOCKEY WHEELS
1724	2 HAND DISPENSERS
1725	3 HOME CINEMA CONNECTING CABLES
1726	BOX TOOLS
1727	TOOL BOX & TOOLS
1728	STEP LADDERS
1729	BOX OF FILES & SPANNERS
1730	2 JOCKEY WHEELS
1731	YELLOW TUB OF SCAFFOLDING CLIPS
1732	BOX GAS FITTINGS ITEMS
1733	2 BAGS OF GOLFING TEES (500 PER BAG)

LOT	DESCRIPTION
1734	BOX SPANNERS
1735	B&D BLOWER
1736	2 JOCKEY WHEELS
1737	2 PICK AXES
1738	ELECTRIC HEDGE STRIMMER
1739	BOX OF TOOLS
1740	MOTOR
1741	TROLLEY OF BOLT TRAYS
1742	2 TRIPODS
1743	BOX MISC
1744	3 BLINDS
1745	CORDLESS DRILL DRIVER SET
1746	FLAT SANDER
1747	BELT SANDER
1748	HEDGE CUTTER
1749	STRIMMER
1750	STRIMMER
1751	2 TRELIS
1752	JIGSAW
1753	WORK BENCH
1754	WHEEL BARROW
1755	SPRAY STATION
1756	WOODEN WHEEL BARROW
1757	HOSE REEL
1758	DYSON
1759	IMPACT WRENCH SET
1760	RYOBI SPRAYER
1761	RYOBI SCREWDRIVER SET
1762	4 GALLON ANTI FREEZE
1763	ANGLE GRINDER 4 1.2"
1764	BLOWER VAC
1765	GREEN WHEEL BARROW
1766	STRIMMER
1767	2 FLAT SANDERS
1768	RYOBI SCREWDRIVER SET
1769	WATER PUMP
1770	ANGLE GRINDER
1771	GENERATOR
1772	SLEDGE HAMMER
1773	MICHELIN COMPRESSOR
1774	CIRCULAR SAW
1775	WALL SAFE
1776	PILLAR DRILL
1777	STRIMMER
1778	STRIMMER

LOT	DESCRIPTION
1779	STEP LADDERS
1780	4 GALL SCREENWASH
1781	18V TWIN BATT DRILL
1782	STEP
1783	12 LTR CHAIN OIL
1784	WASTE DISPOSAL UNIT
1785	WELDER
1786	2 TRELLIS
1787	LAWN SWEEPER
1788	2 TRELLIS
1789	LRG STRIMMER
1790	DUSTBIN & LID
1791	DUSTBIN & LID
1792	SATELLITE KIT
1793	PUSH MOWER
1794	18V 2 BATTERY DRILL
1795	TOILET
1796	TRELLIS
1797	TRELLIS
1798	TRELLIS
1799	TRELLIS
1800	STRIMMER, CHAIN SAW, HEDGE CUTTER KIT
1801	24V DRILL
1802	CIRCULAW SAW
1803	GAS BLOW HEATER
1804	WET N DRY VAC
1805	18V LITHIAN BATTERY DRILL
1806	4PC KIT - HEDGE CUTTER, STRIMMER ETC
1807	SNOW PLOUGH
1808	TILE CUTTER
1809	GENERATOR
1810	BOLT CUTTERS
1811	1 BOX 4 GALL SCREENWASH
1812	ELECTRIC LAWN MOWER
1813	4 GALL ANTI FREEZE
1814	LOG SAW
1815	CABLE REEL
1816	BOSCH SPRAYER
1817	18V CORDLESS DRILL
1818	BOSCH CIRCULAR SAW
1819	WET N DRY VAC
1820	TOILET SET
1821	WHEEL BIN STORE
1822	WHEELY IN STORE
1823	2 RAMS

LOT	DESCRIPTION
1824	LIFT ARMS FOR DB 1694
1825	COMPRESSOR
1826	2 MF WHEELS
1827	5 JERRY CANS
1828	HI LIFT JACK
1829	STRIMMER
1830	2 RAMS
1831	GENERATOR
1832	3 BINS SOIL & PLASTIC FITTINGS
1833	PUMP - 3" SUCKING PIPE
1834	WELDING TORCH & LEAD
1835	WELDING CUTTER & EXT LEAD
1836	QTY HORSE RIDING EQUIPMENT
1837	QTY SACKS
1838	BOX TACKLE
1839	CHAIN & STOOL
1840	2 GAME HANGERS
1841	CHAIR
1842	2 BOTTLE & CRATES
1843	WATER CART
1844	CORN BIN
1845	10 WOODEN CRATES
1846	10 WOODEN CRATES
1847	STOOL
1848	4 DRILL & BITS
1849	ARC WELDER
1850	TRANSFORMER
1851	ACETELYENE TORCH
1852	TROLLEY JACK
1853	GAS LIGHT
1854	JUMP START
1855	QTY TINES
1856	COUPLING
1857	HITCH LOCK COUPLING
1858	2 RAMS
1859	3 ROLLS BARBED WIRE
1860	BUCKET NAILS
1861	DISINFECTANT
1862	VICE
1863	TOW CHAIN & BOLTS
1864	AIR RACHET TOOLS
1865	BOX BOLTS
1866	BOX NAILS
1867	GATE FASTENER
1868	INSPECTION CHAMBER

LOT	DESCRIPTION
1869	CUTTING DISCS
1870	MAKITA GRINDER 110
1871	2 110 EXTENSIONS
1872	BOX NAILS
1873	BUCKET BOLTS
1874	JUMP LEADS
1875	PTO GUARD
1876	3 PHASE EXTENSION
1877	BOX NAILS
1878	MAKIOTA 110 GRINDER
1879	BOX BOLTS
1880	BOX NAILS
1881	BOX MISC TOOLS
1882	BOX BOLTS
1883	BOX NAILS
1884	3 ACRO PROPS
1885	GREASE BARREL
1886	GREASE BARREL
1887	PORTA POWSE
1888	TILLER
1889	3 ELECTRIC FENCE POSTS
1890	LADDER BRACKET
1891	2 SNOW SHIFTERS
1892	SAW BLADES & DISCS (3)
1893	BUNDLE PLASTERING ANGLES
1894	DELIVERY HOSE
1895	RANSOME LAWNMOWER
1896	TRACTOR SEAT
1897	WOOD BURNER
1898	2 WROUGH IRON FLOWER PC'S
1899	BOX NUTS & BOLTS
1900	WATER FEATURE
1901	BAG GATE FITTINGS
1902	2 DELUX BLINDS
1903	2 WROUGHT IRON FLOWER PC'S
1904	4 TROUGHS
1905	BATH
1906	GOLF BAG & CLUBS
1907	BUCKET OF NAILS
1908	GARDEN ORNAMENT
1909	MANHOLE COVER
1910	110 REDUCER
1911	SPOT LIGHT
1912	SCAFFOLD BOARD
1913	TOOL BOX & CHISELS

LOT	DESCRIPTION
1914	EXTENTION LEADS REEL
1915	3 WROUGHT IRON PC'S
1916	LADDER
1917	QTY GALVANISED FLASHING
1918	PAIR STILLSONS
1919	MANHOLE COVER
1920	MANHOLE COVER
1921	2 WROUGHT IRON PC'S
1922	BUCKET STAPLES
1923	LOCK
1924	BOX PANEL PINS
1925	BOX NAILS
1926	BOX RAWPLUGS
1927	2 STOOLS
1928	BOX NAILS
1929	BOX TIMBER FASTENINGS
1930	FIRE EXTINGUISHER
1931	DRUM OF OIL
1932	BOX TIMBER FASTENINGS
1933	BAG HILTI GUN NAILS
1934	BOX SCREWS
1935	2 FUEL PUMPS
1936	BAG POLY PLUMB
1937	BOX DRY WALL SCREWS
1938	PUMP
1939	PAIR STILLSONS
1940	BOX NAILS
1941	QTY HARNESS
1942	MANHOLE COVER
1943	WATER HOPPER
1944	BUCKET OF NAILS
1945	BOX SCREWS
1946	2 TIGHTNERS
1947	BAG TIMBER FASTENINGS
1948	BOX NAILS
1949	BOX NAILS
1950	BAG TIMBER FASTENINGS
1951	BOX STAPLES
1952	CHAIN
1953	MANHOLE COVER
1954	BOX MIXED ITEMS
1955	MANHOLE COVER
1956	BAG WROUGHT IRON
1957	GAS BOTTLE CAGE
1958	WHEEL BARROW WHEEL

LOT	DESCRIPTION
1959	BAG TIMBER FITTINGS
1960	EXTRACTOR FAN
1961	VENT
1962	BUCKET JOINERS FITINGS
1963	PRESSURE FAN
1964	BOX WALL FASTENINGS
1965	LARGE YELLOW PLASTIC TRAY
1966	GAS BOTTLE CAGE
1967	REDUCERS
1968	REDUCERS
1969	BOX HILTI GUN NAILS
1970	BUCKET OF NAILS
1971	2 STOOLS
1972	MANHOLE COVER
1973	GRID
1974	DOOR LOADING ARM
1975	BAG WROUGHT IRON FITTINGS
1976	3 STOOLS
1977	WHEEL BARROW WHEEL
1978	GENERATOR
1979	TOOL CUPBOARD
1980	3 BAGS WOODEN BLOCKS
1981	3 BAGS WOODEN BLOCKS
1982	3 BAGS WOODEN BLOCKS
1983	3 BAGS KINDLING
1984	3 BAGS KINDLING
1985	3 BAGS KINDLING
1986	ALUMINIUM STAGING
1987	ALUMINIUM STAGING
1988	ALUMINIUM STAGING
1989	JOHN DEERE MOWER
1990	HONDA MOWER GSV 190
1991	HONDA MOWER GSV 190
1992	LAND ROVER BOOT LINER

LOT**DESCRIPTION****OUTSIDE**

2700	YELLOW STEPS
2701	CEMENT MIXER FOR BACK OF TRAILER
2702	MINI SPREADER
2703	2 AXELS & WHEELS
2704	PALLET FLAGS
2705	5 POP UP POSTS
2706	PALLET OF BRICKS
2707	WATER BOWSER (HAD RED DIESEL IN)
2708	6 MTR BLACK PIPE
2709	BELFAST SINK
2710	STONE SINK
2711	ALUMINIUM LADDER
2712	ALUMINIUM LADDER
2713	STEP LADDERS
2714	HAY RACK
2715	ROLL BARB WIRE
2716	FEED TROUGH
2717	ROLL PLAIN WIRE
2718	METAL FOOT BATH
2719	LAMP ADOPTER
2720	3 BOLLARDS
2721	5 DOOR GUARDS
2722	5 SMALL DOOR GUARDS
2723	PALLET RIDGE TILES
2724	PALLET STONE
2725	PALLET BLUE EDGINGS
2726	APP 6 LARGE SHELVING SUPPORTS
2727	APP 20 10FT SHELVING BEAMS
2728	PLASTIC DIESEL TANK
2729	3 ACRO PROPS
2730	9" EXCAVATOR BUCKET JCB
2731	5FT EXCAVATOR BUCKET
2732	6FT HYMAC BUCKET
2733	UPRIGHT GAS BOTTLE FRAME
2734	ROLLER TABLE
2735	ROLLER TABLE
2736	ROLLER TABLE
2737	LARGE CATTLE TROUGH
2738	WATER TROUGH & BOWL
2739	4 MISC METAL BUCKETS
2740	3 SMALL SHEEP TROUGHS
2741	CATTLE CRUSH GATE
2742	ROOT FEEDER BUCKET

LOT	DESCRIPTION
2743	LARGE CATTLE FEED TROUGH
2744	GALV CATTLE RING FEEDER
2745	PORTABLE CUBICLE
2746	PORTABLE CUBICLE
2747	PORTABLE CUBICLE
2748	PORTABLE CUBICLE
2749	PORTABLE CUBICAL
2750	PORTABLE CUBICAL
2751	LOGIC ATV TRANSPORT TRAILER
2752	PLASTIC DIESEL TANK
2753	FARROWING CRATE
2754	SMALL CAR TRAILER
2755	TANCO BALE SQUEEZE WITH EURO BRACKETS
2756	1/2 TON BAG OF FIREWOOD
2757	BELFAST SINK LARGE
2758	BELFAST SINK LARGE
2759	BELFAST SINK SMALL
2760	DUMPY BAG FIREWOOD
2761	DUMPY BAG FIREWOOD
2762	DUMPY BAG FIREWOOD
2763	DUMPY BAG FIREWOOD
2764	2 16.9 R38 TYRES
2765	1 4.9 R24 TYRE
2766	TRACTOR WHEEL
2767	YAMNAR TWIN CYLINDER ENGINE - HYD PUMP
2768	AXLE & WHEELS
2769	WATER BOWSER
2771	SET OF DOUBLE GATES
2772	PALLET ASSORTED CATNIC LINTTES
2773	HARDI CROP SPRAYER
2774	CORN CRUSHER
2775	IAE LAMB CREEP FEEDER
2776	JOHN DEERE 1640 8 STUD WHEELS & TYRES
2777	HAYBOB (PTO IN OFFICE)
2778	METAL GATE
2779	METAL GATE
2780	IAE SHEEP TURNOVER CRATE
2781	APPROX 20 CONCRETE FENCE POSTS
2782	KUBOTA 4FT DITCHING BUCKET
2783	KUBOTA 24" KX41/U15 BUCKET
2784	KUBOTA 36" FOR A U25
2785	IFOR WILLIAMS LIVESTOCK TRAILER
2786	IFOR WILLIAM BOX TRAILER
2787	14FT X 7FT TIPPER BODY WITH ELECTRIC RAM
2788	ROLL 6" WAVEY COIL

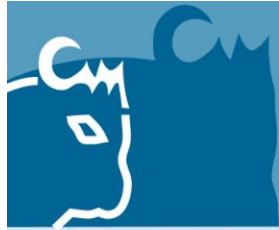
LOT	DESCRIPTION
2789	PALLET STONE FACING BLOCKS
2790	PALLET SANDSTONE FLAGS
2791	PALLET GREY FLAGS
2792	YELLOW WATER BOWSER
2793	MOUNTED CHAIN HARROWS
2794	PALLET FORKS
2795	2 TRAILER WHEELS - 6 STUD
2796	3 WAGON WHEELS - 6 STUD
2797	2 WHHELS TO FIT FORD 3600 FRONT + TYRE
2798	3 PIGLET TROUGHS
2799	3 DBL NIPPLE DRINKERS
2800	HEN CRATE
2801	4 SOLID WHEELS 700X15
2802	205 LITRE DRUM GEAR OIL (SEALED)
2803	IFOR WILLIAMS FLAT 18FTX6FT6
2804	TRACTOR TYRE
2805	9 FLAGS
2806	IFOR WILLIAMS TA510 WITH 1 GATE & TANK
2807	NICON MOWER CONDITIONER WITH SPREADER KI
2808	16FT IFOR WILLIAMS TANDEM AXLE 3.5T
2809	WESTERN WATER BOWSER
2810	WHITE IVECO FLAT BED VAN- NU02 KZT MOT
2811	HONDA TRX 500FM 2009 APP 14,000KM
2812	HONDA TRX 350FM 2 WD MANUAL GEARS 2006
2813	HONDA TRX 500FR 2010 APP 15,000KM
2814	HONDA TRX350 FM 2001 4WD
2815	YAMAHA 4X2 250CC 2007 FOOT CHANGE
2816	1992 HONDA TRX300 4X4
2817	HONDA TRX 300 4X4
2818	RANSOM PARKWAY 2250 MOWER -DX08 GKN
2819	RANSON PARKWAY 2250 MOWER - EU08 LZB
2820	SIT ON FLOOR CLEANER WITH CHARGER
2821	FORDSON MAJOR WITH LOADER
2822	FORDSON POWER MAJOR
2823	10FT FLAT WOOD TRAILER
2824	STRAW CHOPPER
2825	16FT FLAT TRAILER WITH SIDES
2826	BRIERLY 3T TIPPING TRAILER,WOOD FLOOR
2827	I B C TANK
2828	I B C TANK
2829	I B C TANK
2830	WHEEL & TYRE REAR 12.4 / 11-28
2831	REAR WHEEL & TYRE & FRONT WHEEL & TYRE
2832	MOUNTED GRASS HARROWS
2833	CEMENT MIXER

Information for Booking In and Sale Day Procedures

- Unloading facilities will be available on the Friday before the sale from 9am till 2pm, and on the Saturday Sale Day from 8am. Anyone requiring loading facilities outside these times, please arrange directly with **Allan Kay – 07973 784066**
- When booking items in for sale, please inform the staff when you will be collecting any unsold lots. If you are not going to be present at the sale, please ring to enquire if your items have sold, and make arrangements for collection.
- Please put Serial Numbers/Registration Numbers on booking in sheets.
- Any items that may need lifting will be booked in within the outside lots (the loadall will not be allowed in the shed).
- On sale day, the double doors into the bottom shed will be open for people to enter the building, (and remove any small items). The back roller shutter door will be kept closed. No cars and trailers will be allowed in the bottom area of the car park where the outside sale is held.
- At the end of the inside sale, the front car park roller shutter doors will be opened for people to collect items.
- Any purchasers wishing to leave bought items, please inform the office, stating when the items will be collected, then we can arrange for the items to be put into our compound.

LOT

DESCRIPTION



Clitheroe Auction Mart

www.auctionmart.co.uk

Tel: 01200 423325

Auction Sales of Plant, Farm Machinery and Tools

Bi-monthly sales of approx 800 lots of workshop and power tools plus farm implements and small machinery all under cover followed by in the region of 250 lots of large farm machinery & plant (outside) commencing approx 12.30pm

Saturday 18th May 10am

Saturday 27th July 10am

Saturday 21st September 10am

Saturday 30th November 10am



Auction Sales of Vintage & Classic Tractors, Vintage Machinery plus associated parts & spares

Bi-annual sale of approx 300 lots of parts, spares, manuals, wheel & tyres followed by vintage machinery & over 70 Vintage & Classic tractors commencing approx 12.30pm

Saturday 11th May 10am

Saturday 14th September 10am



Why come to our machinery sales

- Early entries encouraged to improve pre sale print and web advertising
- On site storage in compound available in advance of and following the sale
- Free un/loading facilities available day before the sale from 9am – 3pm and day of sale
- All relevant items HPI checked to ensure purchaser reassurance at no extra charge
- Exceptionally competitive vendor commission rates
- No buyers premium or indemnities apply (some items may be subject to sales VAT)
- Full sale day listing (in sale order) available online on the evening prior to the sale
- Large database of customers contacted via website, email, text alerts and from Facebook followings
- Prompt payments to vendors of only 7 working days following the sale by cheque or BACS
- Terms and conditions are listed on the entry forms – available on the website or upon request from the office



 Find us on Facebook

Email: info@auctionmart.co.uk
T: 01200 423325

www.auctionmart.co.uk

Clitheroe Auction Mart, Lincoln Way, Clitheroe, Lancs BB7 1QD

Silverwoods of Lancashire



DB 1200 4WD Selectamatic



MF 575 2WD

For Sale by Auction The Whittingham Collection

Of approx 50 Vintage & Classic tractors including
Ford, Massey Ferguson, Case, David Brown, John Deere,
Fordson, Ferguson Brown & International

Plus associated parts & spares, instruction books & manuals,
Border Fine Arts, wheels & tyres, plus modern tractors & machinery

Saturday 20th April 2013 10.30am

at the Showground, Gubberford Lane, Scorton
Near Preston, Lancashire, PR3 1BL

Viewing: Friday 19th April 10am-4pm & morning of sale from 8.30am

No Buyers Premium • Sales VAT on marked items • Caterers in attendance

More information from Paul Whittingham 07713 128783

Catalogues available online at www.silverwoods.co.uk
or available by email or post upon request to office

Silverwoods of Lancashire
The Ribblesdale Centre, Lincoln Way, Clitheroe, Lancashire BB7 1QD

T: 01200 423322
E: info@silverwoods.co.uk