



Clitheroe Auction Mart

*Auctioneers and valuers of  
breeding, store & prime livestock and machinery*

Ribblesdale Centre, Lincoln Way, Clitheroe, Lancashire BB7 1QD

[www.auctionmart.co.uk](http://www.auctionmart.co.uk)

Auction Sale of  
**Vintage & Classic Tractors  
plus Associated Machinery,  
Parts & Spares**



on

**Saturday 14<sup>th</sup> September 2013**

**Commencing at 10.00am**

Further entries still invited in all sections

Clitheroe Auction Mart  
The Ribblesdale Centre  
Lincoln Way  
Clitheroe  
Lancashire  
BB7 1QD

Tel 01200 423325

## **Sale of Vintage & Classic Tractors & Associated parts**

**Sale commencing at 10.00am with parts & spares following on with Tractors outside (not to be sold before 12.30pm)**

### **Viewing Times:**

Friday 13<sup>th</sup> September 12 noon – 5.00pm (for entries already here)

Morning of sale from 8.30am

### **No Buyers Premium applies to tractors but a premium of 5% plus VAT applies to parts & machinery**

Sales VAT at the rate of 20% may be applicable to some items as announced by the auctioneer at the time of sale or indicated in the catalogue.

VAT export to Non EC countries/VAT exempt countries – Any items subject to Sales VAT which are being exported will be invoiced as zero rated but a further payment to cover the VAT value will be required until all evidence of shipment has been provided – this will then be refunded.

Payment due on day of sale by

- ✓ Cash (maximum £9000)
- ✓ Credit Card (handling fee of 3% of invoice total)
- ✓ Debit Card (no extra fee incurred)
- ✓ Cheque only accepted by prior arrangement (trade reference) with the Company Secretary, Helen Allen, in advance of the sale

Auctioneer contact Joe Worthington

07970 221354

Administration contacts Helen Allen/Nicola Burnop

01200 423325

### **OTHER PURCHASER INFORMATION**

- All prospective purchasers must register to bid and give in their name, address and telephone number prior to the sale. This may be done on the morning of the sale. Any person who has already registered with Clitheroe Auction this year may use their existing buyer's number valid for 2013 which can be obtained from office staff.
- To prevent unnecessary problems, no lots may be removed either during or after the sale without previously being paid for.
- The highest bidder is to be the buyer, regulated by the auctioneer. If any dispute arises the lot may be put up and sold again at the discretion of the auctioneer.
- Storage of goods bought may be arranged with office staff or the auctioneers following the sale. Any successful bidder must report to the office after the sale to instruct staff on payment/storage or the lot may be reoffered following the sale.
- On site catering available on day of sale from 8.00am – 4.00pm

## Sale of Parts & Spares to commence at 10.00am

Items may be brought for sale on Friday 13<sup>th</sup> September from 9am to 4pm and morning of sale from 8.00am until 9.30am.

Please note additional unentered items here by 4.00pm on Friday afternoon will be added to the catalogue list for sale day, items brought on morning of sale will not be catalogue listed.

All items will be allocated lot numbers upon arrival from lot number **1**.

Parts lot numbers 1 - 300 will be allocated on a first come first served basis for parts pre-entered with the office & listed in the catalogue

Parts which have not been pre entered will be allocated on a first come first served basis lot numbers from 301

Items known to be subject to Sales VAT are highlighted in **BOLD** and *ITALICS* – information not comprehensive, please listen to auctioneer announcements at time of sale

Buyers premium of 5% plus VAT applies to this section

Items already entered are;

- Assorted Plough mouldboards (awaiting photos)
- Ranson SCN 9K
- Epic G5K left
- E41SC (x2)
- 665 SC
- 665 LSC
- Misc plough part
- Blackstone (Stamford) tractor seat (repaired)
- Vintage milk churn
- Lister milk sieve/funnel
- **2 x MF165 top links**
- **Various parts for MF cabs (3 diff cabs for MF135)**
- **Box of MF135 parts**
- **Fordson Dexta top link**
- **Grey Ferguson 20 sprung seat**
- **DB990 stabilizer arms & link arm top**
- **DB990 white tool box 1964**
- **Set of printed hessian feed bags**
- **Box of vintage link pins**
- **David Brown tractor seat**
- **IH275 pickup hitch kit**
- **Box of vintage Ferguson tractor parts**

- **Box of old tractor parts**
- **Ferguson 2 furrow plough**
- **Universal ploughing lamp**
- **Box Ferguson discs**
- **Box of old tractor lights**
- **Ford Super Major wiring loom (unused)**
- **Zetor 1968 top link**
- **Lucas David Brown starter unit**
- **Ford 4000 top link**
- **IH 674 top link**
- **IH 885 top link**
- **Deutz 1974 top link**
- **Case 485 top link**
- **MF 1200 top link**
- **MF35 top link & stabilizer arms**
- **Ferguson trailer hand brake unit**
- **Pair Ferguson game flusher extension raker arms 30"**
- **DB red enamel 990 exhaust - original**
- Stihl stone/metal saw
- Viking garden shredder 'AE 2318'
- Tin chest
- 2" petrol engine water pump
- Small PTO water pump
- Pickhill bantam stick welder 180 amps
- Churchill pressure tester 500X
- 110-220 volt petrol generator
- Gas bottle trolley
- Large JCB spanner
- Ford tractor repair manual 2000/3000/4000/5000
- Nuffield drivers handbook Type DM3 DM4 BMC engine
- Zetor operators manual 4911 5945 6911 5911 6945
- Side windows for MF590
- 2 rear windows for International
- MF 35x, 35H & S tractor operators instruction books
- **Swinging drawbar to fit MF35/MF135**
- **9 hole drawbar to fit TE20/FE35**
- **International Harvester B23 finger bar mower connecting rod (new old stock)**
- **Complete new knife to fit IH B23 finger bar mower**
- **10 gallon alloy milk kit**
- New alternator to fit a stationary engine with set of lights on a stand
- Air chisel with attachments

- Ferguson pick up hitch
- 2 x Ferguson top links
- 2 pairs Ferguson adjustable stay bars
- 2 x Ferguson bottom stay bars (axle to lift)
- 2 x Ferguson 9 hole drawbars
- Ferguson reserve diesel tank (2 gallon) & bracket
- David Brown Cropmaster 25D cylinder head complete with rocker cover
- David Brown 990 cylinder head
- David Brown 990 crank shaft
- Fordson Major crank shaft
- Fordson Major cylinder head for petrol TVO
- PTO wood chipper as new
- Fordson N Gear lever
- 2 24x10 tractor tyres
- 2 Front tractor wheel weights
- 2 Epic plough points
- 2 Epic plough shins
- 2 Copper milk buckets
- 2 Plough wings
- **Ferguson tractor jack**
- **Ferguson belt pulley**
- **Various Ford tractor parts**
- Lights stack from series 10 Ford
- Instruction book for International baler
- Instruction book for Vicon Acrobat
- Instruction book for PZ haybob
- Instruction book for Tango loader & Frazer rotaspreader
- Quantity tractor magazines & instruction books
- MF35 belt pulley
- Bamford Royal mower tool box
- Bamford Royal mower knives x 4
- Mower knives x 4
- TEA20 9 hole drawbar/staybars
- Ferguson PUH hook & brackets
- Ferguson plough skimmers
- MF35 9 hole drawbar/staybars
- 600x16 wheel weights
- Sparex MF35/135 head gasket set
- Michelin 650-42 tyre
- 36" wheels & tyres
- Ferguson T bar & pick up hook

- MF top link & pick up hook
- MF front wheel weights
- MF front weight frame
- Ferguson jack
- Ferguson pick up hook
- Ferguson stabilizers & brackets
- Pair 35/135 manifolds
- Zetor top link
- Ferguson wheel centre
- Ferguson drawbar
- Massey Ferguson pulley
- 2 x 10 gallon milk churns
- Pair row crop wheels
- Fordson N-E27N single fill fuel tank
- 2 x Fordson cast iron wheels
- DB Implematic top link (like new)
- Implematic drawbar
- David Brown parts
- Pair IH fenders
- Ford suspension seat
- DB steering box
- DB 950 hydraulic levers
- Pair David Brown 950 front wheel centres
- David Brown 885 fuel tank
- IH cab glass etc
- IH634 tin work and parts

Further entries of parts & spares invited

## Sale of Associated Machinery & Accessories to follow

Items may be brought for sale on Friday 13<sup>th</sup> September from 9am to 4pm and morning of sale from 8.00am until 9.30am.

Please note items here by 4.00pm on Friday afternoon will be catalogued for sale, items brought on morning of sale will not be catalogue listed

Allocated on first come first serve basis, lots numbers from **501** onwards

**Machinery lot numbers 501 - 600 will be allocated on a first come first served basis for machinery pre-entered with the office & listed in the catalogue**

**Machinery which have not been pre entered will be allocated on a first come first served basis lot numbers from 601**

Items known to be subject to Sales VAT are highlighted in **BOLD** and *ITALICS* – information not comprehensive, please listen to auctioneer announcements at time of sale

Buyers premium of 5% plus VAT applies to this section

Entries include;



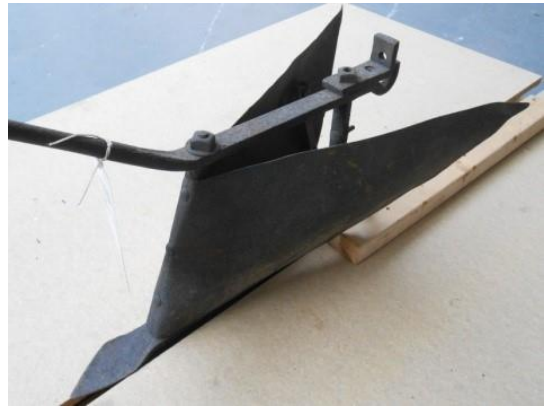
Ferguson saw c/w belt & pulley



Lister 3.5HP stationary engine



Old push off buck rake



***Man plough, formerly displayed at the Tithebarn Restaurant at Garstang***



***Horse drawn cultivator, purchased from Rectory Farm, Croston in 1973***



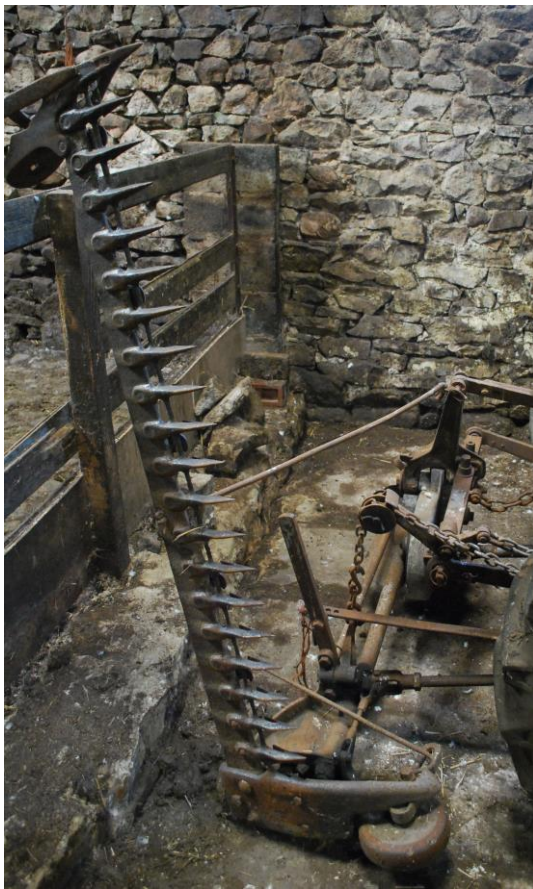
***Horse drawn potato lifter, acquired in 1977***



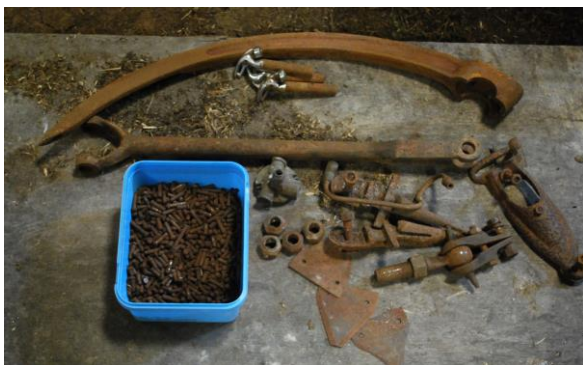
***Horse drawn scarifier, acquired in 1977***



***Plate grinding mill, acquired 1977 in original condition***



**Massey Ferguson rear mounted mowing machine with 3 blades,  
stored under cover**



**Assorted MF mower spares**



**Ferguson tipping trailer**



Corn grinder



Plough attachment for British Simar Rototiller, incomplete, approx. 1950



Swiss Simar miller gearbox & tines, incomplete



Left - Ridger attachment for garden tractor, possibly Mountfield

Below - Mil front end loader, off MF565, may fit other 2WD.  
All brackets inc c/w bucket & fork  
(bucket needs repair)





Weight block for 3 point linkage



Transport box, tips



Bamford BL35 pickup baler, new 1970, stored undercover

- Massey 3 tonne grain trailer
- Ferguson Lampkin Spinner digger
- 6 ton Thwaites dumper for spares/repairs to be sold with one above
- 4' zig zag spike harrow
- Spinner
- **Single row horse drawn seeder – Richmond & Chandler, Manchester**
- Ferguson eath scoop
- 6 x rear wheel weights for Ford 4000 series
- 5 x rear wheel weights for Ford 4000 series
- 12 x Ford front slab weights, stamped Fomoco (3 lots of 4)
- 3 tonne tipping trailer
- Twin wheel livestock trailer
- Ferguson finger mower

- Ferguson pick up hitch
- Ferguson 2 furrow plough
- International B23 mower
- Massey Ferguson 3 part linkage pick up hitch
- Pair Fordson tractor wheels
- 2 vintage machine wheels
- **Complete back end from John Deere, arms etc**
- 2 rear tyres (Ford 5000) 18.4x30" rims 50%
- New Bridgestone tyre 265/70R 15 110S
- 2' JCB bucket & ripper tooth
- **600x19 tractor tyre & tube x 2 new**
- **400x19 tractor tyre & tube x 2 new**
- David Brown loader c/w brackets & bale spike (working order)
- Fertilizer spreader (working order)
- New idea manure spreader in working order
- New Holland cutter bar mower
- Cultivating crane
- Anvil
- Trailer crane with grab in good working order
- Front end loader with hydraulic tilt bucket to fit Ford 4000

Further entries invited in this section

## **Sale of Vintage & Classic Tractors at approx 1.00pm**

Sale of tractors will follow sale of parts & spares commencing at lot **700** onwards. No buyers premium applies to tractors but some are subject to Sales VAT, please listen to auctioneer announcements at time of sale.

Further entries are invited in this section on Friday 13<sup>th</sup> September from 9am – 4pm (later by prior arrangement) or morning of sale from 8am – 11am.

**Tractor lot numbers will be allocated upon arrival and a catalogue list in lot number order will be printed for all Tractors on site by 4.00pm on Friday 13<sup>th</sup> September**

**Tractor lot numbers 700 - 740 will be allocated on a first come first served basis for tractors pre-entered with the office & listed in the catalogue**

**Tractors which have not been pre entered will be allocated on a first come first served basis lot numbers from 741**

All tractors must be in a drivable/winchable state and all running tractors must be left complete with battery and adequate fuel to enable movement when required.

For any vendors who need unloading assistance with lifting equipment, this will be available either on the Friday 10am—3pm or Saturday morning from 8am

All lots subject to arrival

Entries include;



1962 David Brown 990 Implematic  
In excellent condition with  
documents

No VAT



Ferguson TED in excellent  
condition, very little use

No VAT



Ferguson gold belly 4 cylinder diesel, good runner, been on same farm for over 50 years  
No VAT



1962 Super Major , H Wolfenden re-conditioned, pick up, baled this time No VAT



1958 Massey  
Ferguson 35  
Diesel (runner) in  
need of complete  
refurbishment  
Stored under cover



1976 County 1164, fully restored c/w log book, No VAT



Massey Ferguson 565  
In original condition, good runner

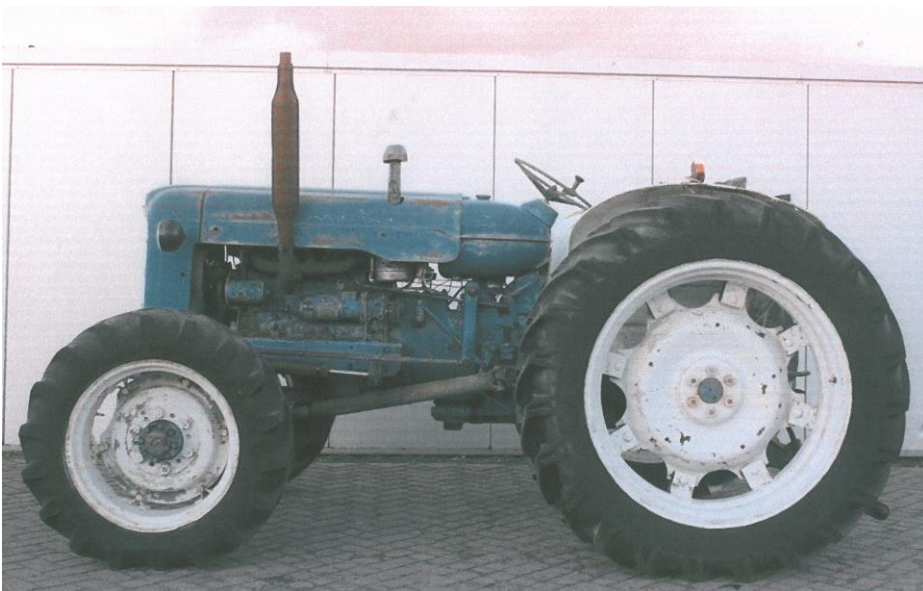
No VAT



1981 Same Tiger 6 105HP 4WD, No VAT



1971 Ford 8000 in good working order,  
No VAT



1964 Fordson Super Major 4WD (Selene)  
No VAT



Nuffield 460  
No VAT



1969 Massey Ferguson 165 c/w log book, barn stored, very original, good runner, been on same farm since 1971



6 ton Thwaites All drive, all steer dumper

One complete  
One spares/repair to be sold together  
Circa 1970s



1972 Leyland 255  
Reg MTN 822L

Stored undercover  
Running

No VAT



1976 David Brown 885  
Council spec  
Reg RUA 796R

Stored undercover  
Running

No VAT



Massey Ferguson 135

Registration document  
Taxed until May 2014

No VAT



1958 Massey Ferguson 35  
4 cylinder complete with V5  
document, reg 217 VRE

No VAT



1972 Ford 5000  
c/w V5 document  
Power steering  
Reg DDE 571K



Ferguson grey gold tractor

No VAT



1965 David Brown 880  
3 cylinder  
2000 hours  
Original  
c/w registration document

No VAT



Fordson Major with a 4 tonne Cookes winch and loader  
No VAT



1972 David Brown 885  
Synchro  
Shell fenders  
In tidy, original condition  
c/w registration  
documents

No VAT



H registered IH 434

Speed amplifier  
Engine/speed amp. Refurbished  
Original

c/w registration document

VAT



1966 John Deere 710  
Good hydraulics, new pump,  
unfinished project

No VAT



Leyland 472  
Kleber tyres  
Rack of weights

c/w registration document

VAT



John Deere 1020  
Good working tractor  
Very tidy

VAT



1975 Ursus C355X  
Working tractor

No VAT



Massey Ferguson 130  
French built tractor

No VAT

- Massey Ferguson 135
- Massey Ferguson 65 Mark 1
- 1965 David Brown 770 red, for refurbishment (no VAT)
- David Brown Oliver 500, rebuilt engine, gearbox, unfinished project (no VAT)
- T registered David Brown 990 4WD, mechanically good, QV cab, complete with registration document (VAT)
- Farmall tractor model club, good runner (No VAT)

Further tractors invited to follow catalogue entries

---

### **VENDOR INFORMATION**

Commission - The Vendor shall pay commission (subject to VAT) to the Auctioneers as follows;

**Vintage & Classic Tractors**—sliding scale of 5% up to £2000, 4% from £2000 to £5000 and 3% thereafter

**Part & Accessories**—10% with a minimum of £1 per lot (plus VAT)

Advertising charges at discretion of Auctioneers

All goods are put up for sale WITHOUT RESERVE at the Auctioneers discretion unless written instructions as to reserves are received by the Clitheroe/Silverwoods Auction office prior to the commencement of the sale.

The vendor must state if items sold are subject to Sales VAT or not and if applicable the VAT number must be given to booking in/administration staff.

A full copy of the terms and conditions relating to sale are available upon request from the office or on the website.

Payment will be made by cheque or BACS payment 7 working days following the sale upon cleared payment for goods sold.

### **Delivery of Lots**

We encourage ALL Tractors and parts to be delivered on  
Friday 13<sup>th</sup> September from 9.00am—4.00pm

We will accept items on morning of sale from 8.00am – 9.30am (tractors until 11.00am), but these will not be listed in the sale day catalogue (other times available by appointment)

Late entries of Tractors and parts will be accepted to follow catalogue lots  
Clitheroe Auction Mart reserve the right to refuse entries considered unsuitable for the sale

All tractors must be in a drivable or winchable state  
Complete Tractors & Tractors for restoration are accepted at the sale

Any items requiring loading/unloading using Loadall facilities will be sold outside

**NEXT SALE OF PLANT, MACHINERY & TOOLS  
NEXT WEEK  
ON SATURDAY 21<sup>st</sup> SEPTEMBER 2013  
SALE COMMENCING AT 10AM**



ENTRIES NOW INVITED FOR ADVERTISING  
TELEPHONE 01200 423325  
OR E-MAIL [info@auctionmart.co.uk](mailto:info@auctionmart.co.uk)

We encourage all items to be entered in advance for advertising  
to help attract buyers to this ever increasing popular sale